

RED

BY
EXPLORER
CASES

Tough Commercial Cases for a Tough World!

Designed for hunters and outdoorsmen, **RED** cases are priced to compete with mass market cases.

Yet provide the unmistakable quality and ruggedness of all EXPLORER Cases.

From the wilds of Africa or Alaska to the deserts of the Sahara or Mojave,

RED Cases are weatherproof, dustproof, crushproof, and shockproof.

Distinguished by the distinctive **RED** logo and red purge valve, **RED** Cases are built stronger to last longer.

Quite simply, **RED** Cases are TOUGH!

● **RED 9413**

Black Short Rifle case with wheels
Int. Dim.: 939x352x137 mm.

● **RED 11413**

Black Rifle case with wheels
Int. Dim.: 1136x350x135 mm.

● **RED 13513**

Black Long Rifle case with wheels
Int. Dim.: 1350x350x135 mm.



"We use 'em. We abuse 'em... I won't trust my gear to any other case than an Explorer Case." Mike Dianda - Prime Revolution TV



HARD CASES

MADE IN ITALY

www.explorercases.com

All models
are provided
with wheels



RED Cases are available in three different versions, empty, with precubed foam or with two layers of convoluted foam, to properly protect your gun and accessories.

- **Mod. RED9413.BE**
Completely empty
- **Mod. RED9413.B**
Precubed foam in the bottom and convoluted foam in the lid
- **Mod. RED9413.BCV**
Convoluted foam in the lid and in the bottom
- **Mod. RED11413.BE**
Completely empty
- **Mod. RED11413.B**
Precubed foam in the bottom and convoluted foam in the lid
- **Mod. RED11413.BCV**
Convoluted foam in the lid and in the bottom
- **Mod. RED13513.BE**
Completely empty
- **Mod. RED13513.B**
Precubed foam in the bottom and convoluted foam in the lid
- **Mod. RED13513.BCV**
Convoluted foam in the lid and in the bottom

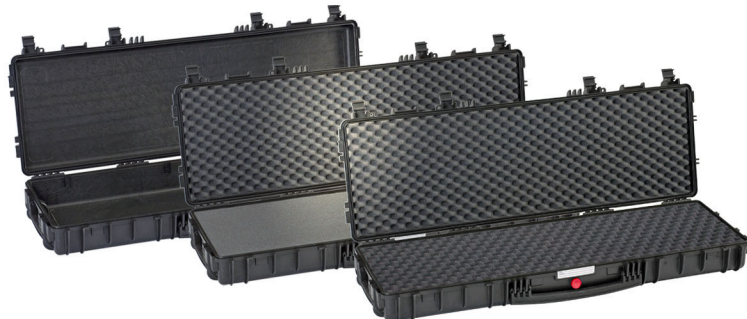
G Sleeves: Ready-to-Go padded gun bags!

Designed to secure your valuable rifle and accessories, the new **G Sleeve** bags provide protection in a highly mobile condition.

A lightweight ruggedized 600D polyester outer fabric protects from humidity, while a padded interior keeps your rifle well protected.

The internal rifle retention straps and the neoprene side flaps keep your firearm properly fixed.

- **Mod. GSLEEVE 94**
Ext. Dim.: 935x340x70 mm.
- **Mod. GSLEEVE 114**
Ext. Dim.: 1135x340x70 mm.
- **Mod. GSLEEVE 135**
Ext. Dim.: 1345x340x70 mm.



RED
BY EXPLORER
CASES